



# Advancing sustainability transformations through building capacity in social economy's organizations

Silvia Mugnaini - PhD Student - [silvia.mugnaini@unifi.it](mailto:silvia.mugnaini@unifi.it)

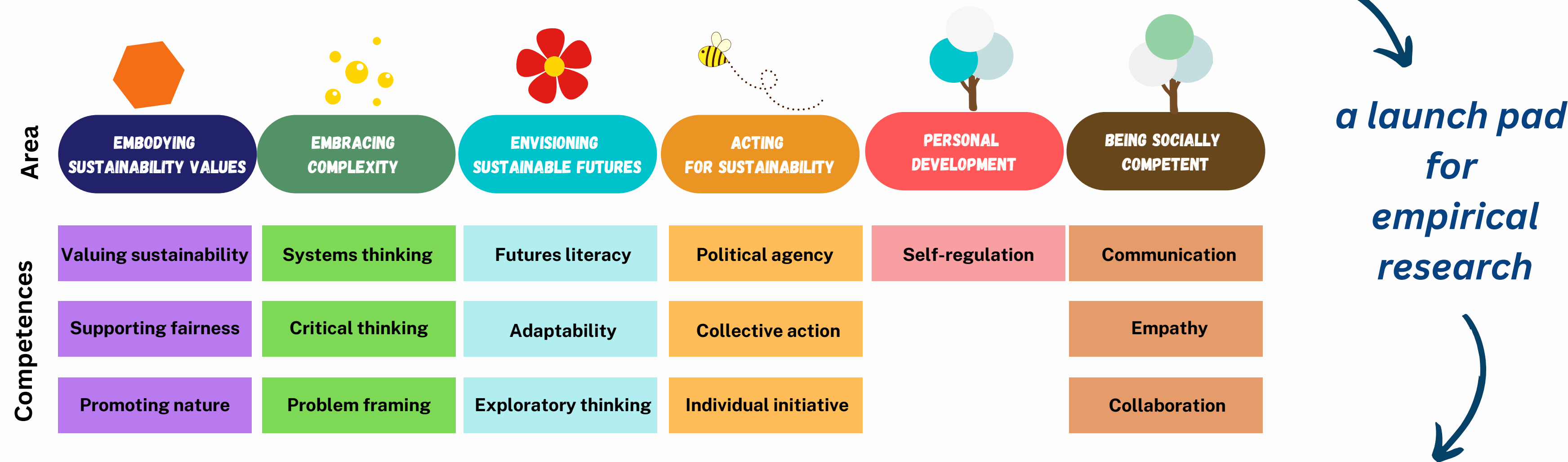
## AREA OF INVESTIGATION

From a critical review on sustainability competences frameworks it emerges that capacity building to adopt more sustainable practices is needed within **professional contexts of Social Economy (SE) Organisations** in which **non formal and informal learning** take place.

## HYPOTHESIS

Sustainability competences, applied by SE organisations, can constitute a leverage point in sustainability transformations, if they are made explicit, strengthened and brought to the awareness of the organisations, through lifelong learning actions.

## Synthesis of sustainability competence frameworks



## EMPIRICAL RESEARCH STRATEGY

In a mixed methods design, emerging methods are employed as qualitative research and interpretative observational research. The strategy continuously adapts and refines itself considering emerging results of the study.

## STUDY SAMPLE

SE organisations in Italy (Cepiss, Pegaso Network, Associazione La Barchetta, Mediterranea, Scuola Paritaria per l'Infanzia Margherita Fasolo)  
SE organisations in Sweden (TBC)

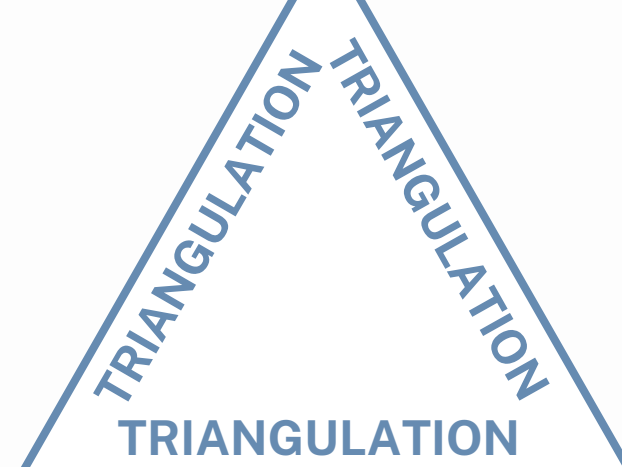
## RQ 1

Which competences are needed by SE Organisations to carry out sustainability initiatives?

## RQ 2

Which embedded educational processes can awake the agency of SE Organisations to contribute to sustainability transformations?

## DATA COLLECTION TOOLS



### WORKSHOP

16th May 2023  
*Le competenze dell'economia sociale per lo sviluppo umano sostenibile*  
Metaplan



### DIVERSIFYING PERSPECTIVES

26th June 2023  
29th September 2023  
Collaborative research with Moca Future Designers

### CONTRIBUTION TO THE PARTNER

Training service for the development of sustainability competences for SE organisations



### WORKSHOP

November & December 2023  
*Kooperativ Utveckling: awake your agency as a catalyst for change towards sustainability*  
Comparative study in Sweden (Malmö and Växjö)



### PROFORMA CASE STUDY

The empirical material for this study is being collected through a 1 year long ethnographic approach featuring participant observation consisted in supporting the social enterprise in their work with sustainability-related projects and events. Field notes were collected, setting out to gather an understanding of the culture of the social enterprise and how sustainability initiatives are sustained in practice. Unstructured interviews and group interviews are being carried out. To complement the notes, data from the website and social media of the social enterprise as well as from private and public documents were collected.

To validate the ethnographic research and promote the assumption of collective responsibility of the processes and outputs of the research a series of laboratories will be held, using participatory action research to stimulate a reflection on the social enterprise's working model based on the embodiment of sustainability values and on mobilizing sustainability competences.

### CONTRIBUTION TO PARTICIPANTS

Outcome: Professional standards guiding SE organisations in promoting sustainability initiatives

### CONTRIBUTION TO THE PARTNER

Outcome: Strengthening Proforma's identity in coherence with its values, vision, processes and initiatives.  
Output: Final restitution through support in the drafting of the Bilancio Sociale oriented towards sustainability.

## DATA ANALYSIS & DISSEMINATION

Content analysis: key constructs and negotiated meanings emerge, which are shared with the participants of the study. The research is disseminated for the benefit of both the scientific community and third parties (EdaForum and Forum del Terzo Settore).

## REFERENCE LIST

Coggi, C., & Ricchiardi, P. (2005). *Progettare la ricerca empirica in educazione* (pp. 1-270). Carocci.  
Del Gobbo, G., Falconi, S., Mugnaini, S., & De Maria, F. (2023). La ricerca pedagogica per la transizione verso la sostenibilità: un caso di ricerca collaborativa e apprendimento research-based. In *Ricerca partecipativa e formazione sistemica* (pp. 574-585). Pensa MultiMedia.  
Law, J. (2004). *After method, Mess in social science research*. Routledge.  
Orefice, P. (2006). *La ricerca azione partecipativa: Teoria e pratiche*. Liguori.  
Tham, M., Ståhl, Å., & Hyltén-Cavallius, S. (2019). *Oikology-Home Ecologies: a book about building and home making for permaculture and for making our home together on Earth*. Linnaeus University Press.  
Trincheri, R., & Robasto, D. (2019). *I mixed methods nella ricerca educativa* (pp. 1-138). Mondadori Education spa.



Listen to the podcast!



Quality Assurance in Research and PhD Program  
New perspective in Higher Education  
7th November 2023

